

*Didactic music*

# Easy scales for bassoon

w w w . c o m p o s e r s h o p . c o m

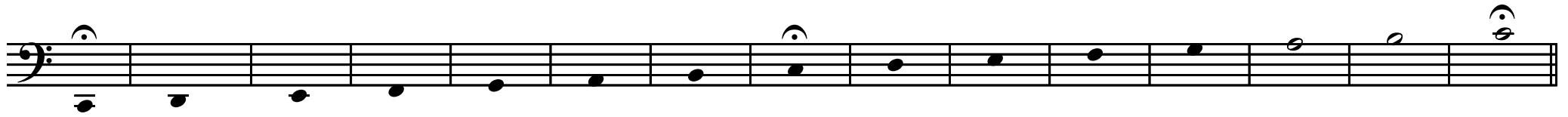
*Downloaded from*

www.composershop.com *HighQualitySheetMusic*

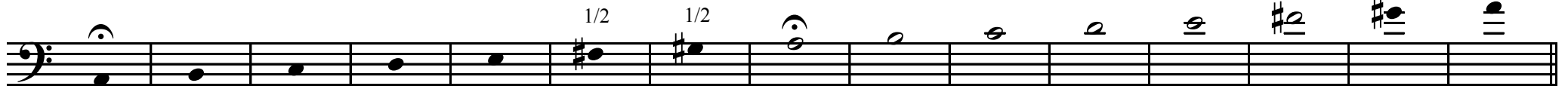
# Easy scales for bassoon

www.composershop.com

## C major



## A minor



F major

First line of the F major scale in bass clef. The notes are F2, G2, A2, Bb2, C3, D3, E3, F3. The first F has a fermata. The second F has a 1/2 note value. The Bb has a flat sign. The scale ends with a double bar line.

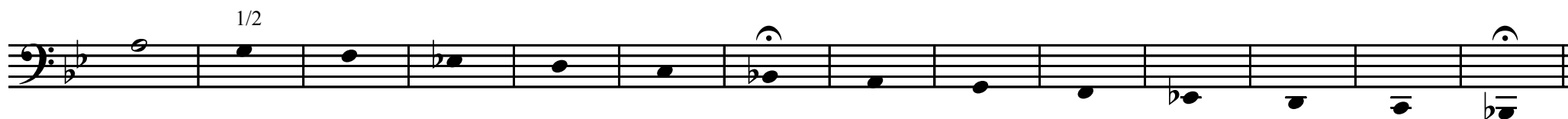
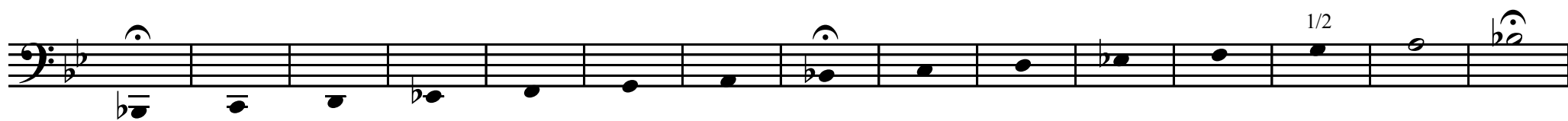
Second line of the F major scale in bass clef. The notes are G2, A2, Bb2, C3, D3, E3, F3, G3. The Bb has a flat sign. The first G has a 1/2 note value. The scale ends with a double bar line.

D minor

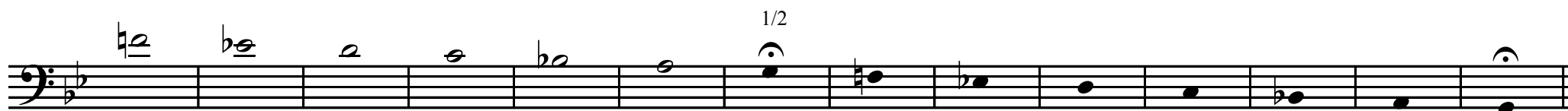
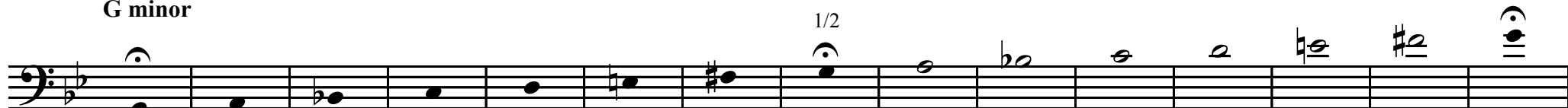
First line of the D minor scale in bass clef. The notes are D2, E2, F2, G2, Ab2, Bb2, C3, D3. The Ab and Bb have flat signs. The first D has a fermata. The second D has a 1/2 note value. The scale ends with a double bar line.

Second line of the D minor scale in bass clef. The notes are E2, F2, G2, Ab2, Bb2, C3, D3, E3. The Ab and Bb have flat signs. The first E has a 1/2 note value. The scale ends with a double bar line.

## Bb major



## G minor





## A major

First line of the A major scale in bass clef. The notes are: A2 (half note), B2 (quarter), C3 (quarter), D3 (quarter), E3 (quarter), F3 (quarter), G3 (quarter), A3 (half note). The key signature has two flats (Bb, Eb).

Second line of the A major scale in bass clef. The notes are: B2 (half note), C3 (quarter), D3 (quarter), E3 (quarter), F3 (quarter), G3 (quarter), A3 (half note), B3 (half note). The key signature has two flats (Bb, Eb).

## F minor

First line of the F minor scale in bass clef. The notes are: F2 (half note), G2 (quarter), Ab2 (quarter), Bb2 (quarter), C3 (quarter), D3 (quarter), Eb3 (quarter), F3 (half note). The key signature has three flats (Bb, Eb, Ab).

Second line of the F minor scale in bass clef. The notes are: G2 (half note), Ab2 (quarter), Bb2 (quarter), C3 (quarter), D3 (quarter), Eb3 (quarter), F3 (half note), G3 (half note). The key signature has three flats (Bb, Eb, Ab).



## Gb major

1/2 1/2 1/2 1/2 1/2 1/2 1/2 1/2

1/2 1/2

## Eb minor

1/2 1/2

1/2 1/2



G major

1/2 1/2

1/2 1/2

E minor

1/2 1/2

1/2 1/2

**D major**

Musical notation for the D major scale in bass clef. The scale is written in two lines, ascending and descending. The key signature has two sharps (F# and C#). The ascending scale starts on D2 and ends on D3. The descending scale starts on D3 and ends on D2. The notes are: D, E, F#, G, A, B, C#, D, C#, B, A, G, F#, E, D. The descending scale has a fermata over the final D2. There are two '1/2' markings above the notes C# and B in both directions, indicating half-note durations.

**B minor**

Musical notation for the B minor scale in bass clef. The scale is written in two lines, ascending and descending. The key signature has two sharps (F# and C#). The ascending scale starts on B2 and ends on B3. The descending scale starts on B3 and ends on B2. The notes are: B, C, D, E, F#, G, A, B, A, G, F#, E, D, C, B. The descending scale has a fermata over the final B2. There are two '1/2' markings above the notes F# and G in both directions, indicating half-note durations.

## A major

Musical notation for the A major scale in bass clef, consisting of two staves. The first staff shows the ascending scale: A2, B2, C#3, D3, E3, F#3, G#3, A3, G#3, F#3, E3, D3, C#3, B2, A2. The second staff shows the descending scale: G#3, F#3, E3, D3, C#3, B2, A2, G#3, F#3, E3, D3, C#3, B2, A2. The key signature has three sharps (F#, C#, G#).

## F# minor

Musical notation for the F# minor scale in bass clef, consisting of two staves. The first staff shows the ascending scale: F#2, G#2, A2, B2, C#3, D3, E3, F#3, G#3, A3, G#3, F#3, E3, D3, C#3, B2, F#2. The second staff shows the descending scale: E3, D3, C#3, B2, A2, G#2, F#2, G#3, F#3, E3, D3, C#3, B2, A2, G#2, F#2. The key signature has three sharps (F#, C#, G#). There are "1/2" markings above the notes G#3 and F#3 in both staves, indicating a half-note rest for those notes.

**E major**

Two staves of musical notation for the E major scale in bass clef. The first staff shows the ascending scale: E2, F#2, G#2, A2, B2, C#3, D#3, E3. The second staff shows the descending scale: D#3, C#3, B2, A2, G#2, F#2, E2. The notes are marked with a fermata above the first and last notes. The time signature is 1/2, indicated by '1/2' above the notes.

**C# minor**

Two staves of musical notation for the C# minor scale in bass clef. The first staff shows the ascending scale: C#2, D#2, E2, F#2, G#2, A2, B2, C#3. The second staff shows the descending scale: B2, A2, G#2, F#2, E2, D#2, C#2. The notes are marked with a fermata above the first and last notes. The time signature is 1/2, indicated by '1/2' above the notes.

**B major**

Musical notation for the B major scale in bass clef. The key signature has three sharps (F#, C#, G#). The scale is written in two staves. The first staff shows the ascending scale: B2 (half note), C#3 (quarter), D3 (quarter), E3 (quarter), F#3 (quarter), G#3 (quarter), A3 (quarter), B3 (half note). The second staff shows the descending scale: A3 (quarter), G#3 (quarter), F#3 (quarter), E3 (quarter), D3 (quarter), C#3 (quarter), B2 (half note). There are two '1/2' markings above the notes A3 and G#3 in the descending staff, indicating half-note durations for those notes.

**G minor**

Musical notation for the G minor scale in bass clef. The key signature has two sharps (F#, C#). The scale is written in two staves. The first staff shows the ascending scale: G2 (half note), A2 (quarter), B2 (quarter), C3 (quarter), D3 (quarter), E3 (quarter), F#3 (quarter), G3 (half note). The second staff shows the descending scale: F#3 (quarter), E3 (quarter), D3 (quarter), C3 (quarter), B2 (quarter), A2 (quarter), G2 (half note). There are two '1/2' markings above the notes F#3 and E3 in the descending staff, indicating half-note durations for those notes.